

Figure 2A-Source data

Imaged 5-19-2022  
4-15% BioRad Tris-Glycine gel  
200V for 40 min

Figure 2A-Source Data 1

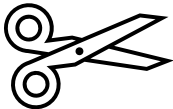
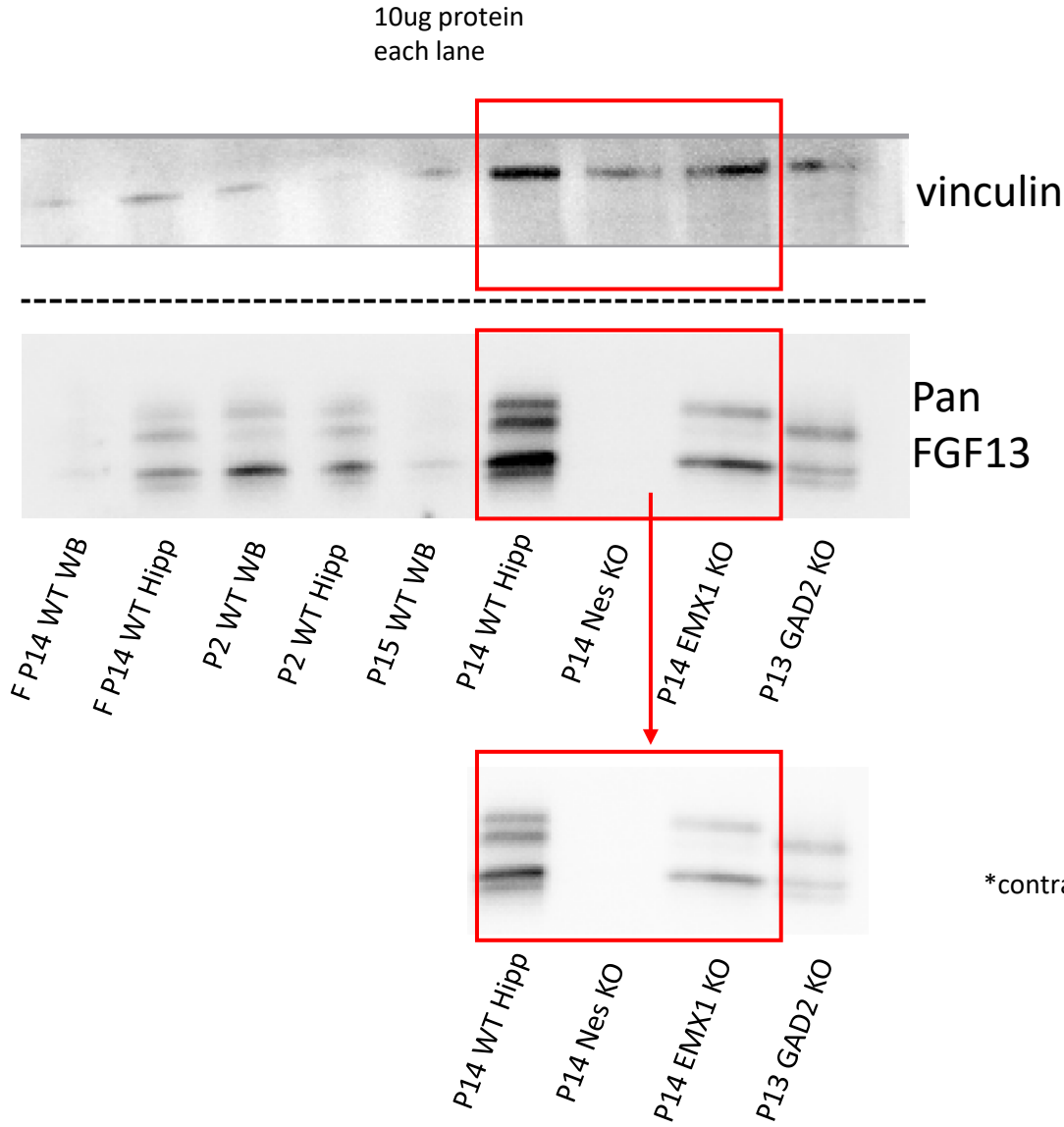


Figure 2A-Source Data 2



\*contrast adjusted

Gel cut where indicated, probed separately for vinculin (top) and FGF13 (bottom). Image contrast for FGF13 adjusted